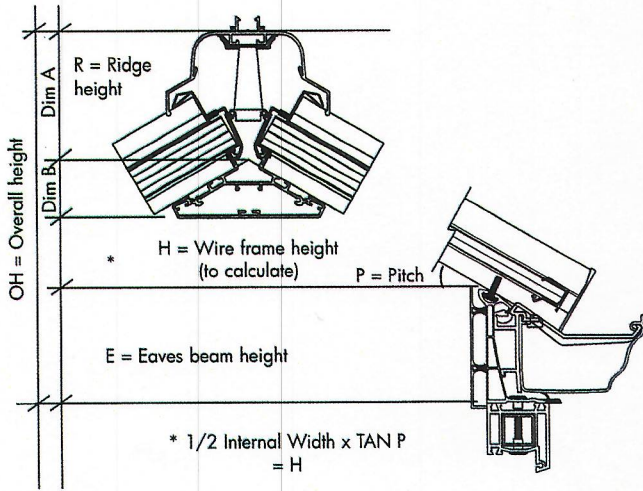
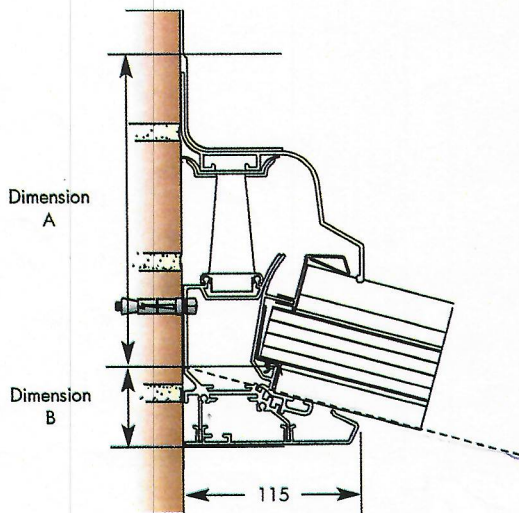


Ridge Height Calculation



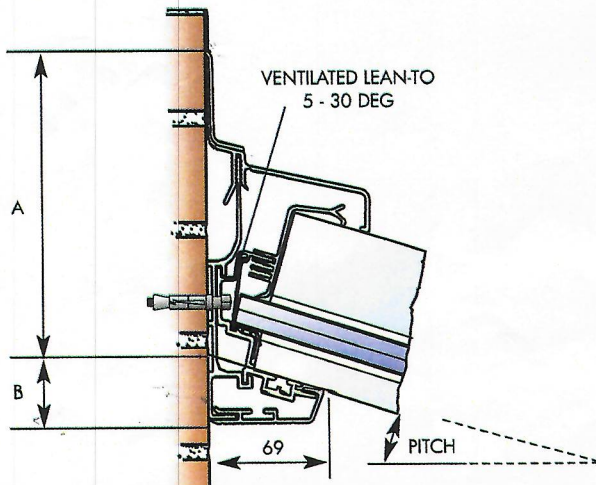
RIDGE HEIGHT CALCULATION			
R=RIDGE HEIGHT	E= EAVES HEIGHT	DIMENSION B	
P=Pitch	7 Series		
	(A)		
15	154	109	44
20	148	109	48
25	142	109	56
30	136	110	61
35	130	110	71
40	124	110	81

Half Ridge Height Calculation



HALF RIDGE HEIGHT CALCULATION		
P=PITCH	DIMENSION A	DIMENSION B
5°	219	32
10°	209	41
15°	200	51
20°	190	60
25°	181	69
30°	171	79

Lean-to Wallplate Calculation



LEAN-TO WALL PLATE CALCULATION		
P=PITCH	DIMENSION A	DIMENSION B
5°	168	25
10°	161	32
15°	156	35
20°	153	41
25°	150	47
30°	145	54